



BLANDFORD FORUM TOWN COUNCIL

Local Winter Maintenance Plan

Contents

Background

- 1 Litigation
- 2 Contacts
- 3 Priority Areas for Access
- 4 Salt Bins
- 5 Volunteers
- 6 Guidance on Snow Clearing
- 7 DCC Contacts
- 8 BFTC Contacts
- 9 Parish Map
- 10 Co-ordination

Appendices

- 1 Glossary of Terms
- 2 Sample Statement
- 3 Criteria for Inclusion
- 4 Precautionary and Community Routes
- 5 Priority Ploughing Network
- 6 Farmers Snow Ploughs
- 7 Weather Station Map
- 8 Weather Domain Map
- 9 Advice on Hand Salting
- 10 DCC Winter Service Policy

BACKGROUND

The experience of the recent past winters highlighted the importance of co-operation between the various agencies and the value of the Town/Parish Councils' roles within their communities.

Blandford Forum Town Council (BFTC) does not have a statutory duty to prepare for and deal with snow and ice, but we are in a good position to inform the principal authorities about local needs and we want to do whatever else we can do for our community.

Guidance has been published on preparing for winter events and on community resilience. This document draws from all of those in preparing BFTC's Winter Management Plan which sets out to clarify what the community can expect from the principal authorities and what the Town Council has put in place so we can be better prepared to help ourselves. The plan will be reviewed annually.

Legal Advice

Throughout the country people have been hesitant to clear snow because of fears of litigation if someone should slip on the treated area. This contrasts strongly with winters of a few decades ago when the community would mobilise to clear footways.

1. LITIGATION

In a recent letter sent by the Ministry of Justice it stated that "The prospect of a person who volunteers to clear snow from a pavement being successfully sued for damages by a person who subsequently slips on the cleared area and is injured are very small".

A snow clearer does have a duty to clear with reasonable care so as not to create a new and worse risk.

Do's

- Follow the Town/Parish Council Winter Management plan
- Move snow to a porous surface such as grass verge or garden
- Spread salt / grit evenly and at the appropriate spread rates (see Annex 9)
- Clear any excess salt or grit once the snow/ice has melted.

Don'ts

- Use water to melt snow and ice, if there is a risk it will refreeze
- Move snow to a location where it will create another risk such as another part of the pavement, road or where people are likely to walk.
- Use excessive salt, grit or other material so as to create a new or worse risk.

Full details of the "Snow Code" can be found at www.direct.gov.uk.

2. CONTACTS

The Chairman of Blandford Forum Town Council will take the lead in co-ordinating local resources during adverse weather. The Town Clerk and Grounds & Property Manager (G&PM) will receive a copy of the Daily Decision issued by DCC and liaise with the Chairman of Council and other key personnel and local contacts as to any actions to be taken.

Co-ordinator

- Takes a lead in co-ordinating local resources.
- Receives the Daily Decision from DCC Duty Officer via the Town Council Office (1st November to 31st March).
- Liaises with other key personnel and local contacts.
- Makes decision on triggering the implementation of the Winter Plan.

Chairman Cllr Esme Butler
 7 Staverton Walk
 Blandford Forum
 Dorset DT11 7TN
Tel: 01258 480756
Email: esbutler@sky.com

2nd Contact

Town Clerk Mrs Linda Scott-Giles
 Blandford Forum Town Council
 Town Clerk's Office, Church Lane
 Blandford Forum
 Dorset DT11 7AD
Work Tel: 01258 489490
Mobile: 07565 209946
Email: linda@blandfordforum-tc.gov.uk

3rd Contact

G&PM Mr Jon Goodenough
 Blandford Forum Town Council
 Town Clerk's Office, Church Lane
 Blandford Forum
 Dorset DT11 7AD
Tel: 01258 454500
Mobile: 07971 090117
Email: jon@blandfordforum-tc.gov.uk

Email Contacts for Daily Decision:-

linda@blandfordforum-tc.gov.uk and jon@blandfordforum-tc.gov.uk

3. PRIORITY AREAS FOR ACCESS IDENTIFIED BY THE TOWN COUNCIL

Blandford Camp

Black Lane

School

Access roads to The Blandford School, Archbishop Wake Primary School and Milldown Primary School.

Doctors Surgeries

Whitecliff Mill Street

Hospital

Milldown Road

Police Station

Peel Close

Ambulance Station

Sunrise Business Park

DCC Homes for the Elderly

Castleman House

Fairfield Bungalows

4. SALT BINS

Salt bins are located at the following locations:-

Installed October 2010:

Angus Close/Hunt Road

Elizabeth Road/King's Road

Highfields/Wilson Park

Queen's Road/St Leonards Avenue

St Leonards Avenue/Bayfran Way

Bottom of Westbury Way

Woodhouse Gardens/Post Office

Badbury Drive/Mortain Close

Eastleaze Road/rear of No.62

Philip Road (pre-2010)

To be installed October 2011:

Top of Westbury Way

Ashmore Close

Ramsbury Close

Medbourne Close

Overton Walk/Hilcot Way
 Cadley Close/Froxfield Road
 Preetz Way
 Buttercup Lane/Larksmead
 Tudor Gardens
 Philip Road/Andrew Close
 Barnes Close/Elizabeth Road
 Langton Road/Meadow View

These bins are filled during late summer by DCC.

The salt supplied by DCC is for use on the public highway only. BFTC has displayed signs inside the lid of the bins stating that the contents is only for this use and has also written to residents within close proximity of the bins advising them of the same information.

Over salting damages the environment and the spread rate for hand salting should not exceed 20g/m² (this is about a tablespoon).

BFTC will be storing a dumpy bag of salt at the allotment compound. It is also hoped that, if necessary and subject to their stock levels, it may be possible to request access to DCC's salt from its depot in Blandford.

5. VOLUNTEERS

Cllr Steve Hitchings	To assist caretaker/grounds staff with gritting Town Council venues
Cllr Mike Owen	To assist caretaker/grounds staff with gritting Town Council venues

6. GUIDANCE ON SNOW CLEARING AND SALT SPREADING

Snow clearers have a duty to take reasonable care so as not create a new and possible worse hazard, such as piling up heaps of snow, blocking drains or leaving an area in such a condition as to make slips more likely.

Snow is easier to clear when it's fresh than when it has been compacted and frozen. Clearers should take care not to over exert themselves when clearing snow.

We ask residents to respect BFTC's responsibility to manage the supply of salt and to observe the guidance.

Pre-salting footways prior to snow aids its removal.

Do:

- Wear suitable clothing and footwear.
- Clear a 1.0m path along the footway ensuring not to create a worse hazard.
- Make sure that salt is accessible before commencing work.
- Clear snow as soon as possible to prevent any compaction.
- Pay particular attention to steps and steep slopes.
- Move snow to porous surfaces such as verges or gardens.
- Treat surface immediately with salt.
- Spread salt evenly at a rate of 20g/m² (tablespoon).
- Do not spread salt on private areas.
- Avoid applying salt to plants or grass.
- Return unused salt to the bin.

Don't

- Use salt from public bins on private paths and drives.
- Use water to melt ice and snow if there is a risk it will refreeze.
- Move snow to a location where it will create another hazard.
- Block drives, paths or drains or pile snow against buildings.
- Use excessive salt, 20g/m² is sufficient

7. CONTACTS

For DCC Highways the single point of contact is the Winter Service Manager whose contact details are listed below.

By Phone: 01305 251000

By Email: winterservice@dorsetcc.gov.uk

By Post: DCC Highways, Charminster Depot
Wanchard Lane, Charminster
Dorchester DT2

Technical Officer for Blandford Area: Rolly Skeats

Other information can be found on DCC's web site: www.dorsetforyou.com/winter.

8. BFTC CONTACTS

For Blandford Forum Town Council the Chairman of Council is the principal contact to coordinate resources during adverse winter weather (contact details listed in Section 2). The Chairman will liaise with the Town Clerk and Grounds & Property Manager to determine what efforts can be made by the Town Council to facilitate access for the town's residents. Additional advice from DCC for local councils to establish a suitable trigger to start implementing plans is attached (see Annexes 7 to 10)

9. PARISH MAP

The map on page 8 illustrates the locations of the grit bins purchased by Blandford Forum Town Council and filled by Dorset County Council as at 1 November 2011.

1. Top of Westbury Way
2. Bottom of Westbury Way
3. Langton Road/Meadow View
4. St Leonards Avenue/Bayfran Way
5. Queen's Road/St Leonards Avenue
6. Highfields/Wilson Park
7. Elizabeth Road/King's Road
8. Barnes Close/Elizabeth Road
9. Angus Close/Hunt Road
10. Philip Road (pre-2010)
11. Philip Road/Andrew Close
12. Tudor Gardens
13. Buttercup Lane/Larksmead
14. Preetz Way
15. Cadley Close/Froxfield Road
16. Overton Walk/Hilcot Way
17. Medbourne Close
18. Ramsbury Close
19. Ashmore Close
20. Badbury Drive/Mortain Close
21. Eastleaze Road/rear of No.62
22. Woodhouse Gardens/Post Office



GRIT BINS IN BLANDFORD FORUM

DorsetExplorer.com
 Date: 21/10/2011
 Easting: 389000
 Northing: 107013
 Scale: 1:16931

10. COORDINATION

Once effective lines of communication have been established understanding each party's capabilities and limitations are essential to ensure coordination of efforts. Advanced knowledge of these capabilities aid a realistic attitude to what can be achieved and will prevent disappointment and unrealistic expectations.

DCC's service includes

- Bulk purchase and storage of salt
- Filling salt bins and delivering bulk bags (where resources permit)
- Issuing farmers with snow ploughs (see Annex 6)
- Pre-treatment of selected roads (see Annex 3,4 & 5)
- Reactive treatment of roads when resources permit
- Monitoring local weather forecasts
- Issuing a daily decision based on the forecasts
- Provide advice and training (See Annex 7 to 10)

The daily decision is issued by email between 1st November and 31st March.

APPENDIX 1 - GLOSSARY OF TERMS

Precautionary Salting Network

There are c.4,000km of roads within Dorset and whilst it would be convenient to spread salt on all roads during adverse weather realistically we have to prioritise which road we treat. The Precautionary Salting Network is c.1,100 km of roads which meet the criteria for inclusion (see Annex 4) and forms the network which is treated in advance of adverse weather. In addition to this network there is a Community Route Network which is only pre-salted when snow is forecast.

Priority Ploughing Network

This network is used during very severe snowfall when the resources available to DCC are not sufficient to keep all of the Precautionary Salting Network clear of snow and open to traffic. Once this network has been cleared and open to traffic then the Precautionary Salting Network is cleared.

Weather Stations

Currently there are 5 weather stations across the County (see Annex 7), by the winter of 2011/2012 there number will be increased to 9 to assist in the domain based decision making. These stations provide real time information on road surface temperatures, air temperature, dew point and precipitation.

Weather Domains

Dorset is divided into 5 weather domains (see Annex 8) to reflect the topographical and metrological differences across the County. The decision to treat the network is based on the individual forecasts for each of these domains. You will need to know which of the domains you are in to interpret the forecast and associated decision.

Weather Forecast Provider

Over the last few years DCC has employed the services of the Meteo Group to provide specific daily weather forecast of road surface temperatures and conditions across the County. The contract for this service is being re-tendered at this time (April 2011).

De-icing Road Salt

Salt is the preferred material used for treating the Precautionary Salting Network. When salt is spread on the road surface it combines with moisture on the surface or air to form a brine solution which freezes at a lower temperature than rainwater. Salt loses its effectiveness at temperatures below -8.0 degree Celsius.

Grit

Grit or sharp sand are used either as an alternative to salt or in combination. Grit can provide traction when spread on top of compacted snow or ice but has no melting capability.

Salt bins

Permanent roadside receptacle for the storage of salt or grit for use on the public highway, as a form of self help. Bins are not provided by DCC but will be filled with salt or grit when resources allow.

Bulk Bags

One tonne bags of salt have been delivered to councils where undercover storage has been provided. This salt has been made available for the councils to top up grit bins and to treat key areas during adverse weather (snow).

Spread Rates

The amount of salt applied to a surface varies depending on the forecast received. typically.

- 10 grams of salt is applied to each square metre of road surface as a precautionary treatment when frost, hoarfrost or icy patches are expected.
- 15 grams per square metre is spread if widespread icy or ice following rain if forecast.
- 20 grams per square metre is spread at the formation of widespread ice.
- 20 grams per square metre is spread following a forecast of snow.
- 20 grams per square metre is spread following ploughing, subsequent applications are made with 50% salt / grit mix.

Precautionary / Reactive Treatments.

As the name suggests precautionary treatments take place before the predicted event to allow time for the salt to turn into brine. Reactive treatments such as snow ploughing can only take place once snow has accumulated.

APPENDIX 2 - STATEMENT

Salt Bin Locations

Salt Bins are located at :-

Installed October 2010:

Angus Close/Hunt Road
Elizabeth Road/King's Road
Highfields/Wilson Park
Queen's Road/St Leonards Avenue
St Leonards Avenue/Bayfran Way
Bottom of Westbury Way
Woodhouse Gardens/Post Office
Badbury Drive/Mortain Close
Eastleaze Road/rear of No.62
Philip Road (pre-2010)

To be installed October 2011:

Top of Westbury Way
Ashmore Close
Ramsbury Close
Medbourne Close
Overton Walk/Hilcot Way
Cadley Close/Froxfield Road
Preetz Way
Buttercup Lane/Larksmead
Tudor Gardens
Philip Road/Andrew Close
Barnes Close/Elizabeth Road
Langton Road/Meadow View

The Town Council has a Parish Dumpy Bag in storage at Lamperd's Field allotment compound.

Members of the public should contact the Town Council if salt bins need refilling. Town Council staff will then refer the matter to DCC.

Point of Contact

Chairman	Cllr Esme Butler 7 Staverton Walk Blandford Forum Dorset DT11 7TN
Tel:	01258 480756
Email:	esbutler@sky.com

Town Clerk	Mrs Linda Scott-Giles Blandford Forum Town Council Town Clerk's Office, Church Lane Blandford Forum Dorset DT11 7AD
Work Tel:	01258 489490
Mobile:	07565 209946
Email:	linda@blandfordforum-tc.gov.uk

Areas to be Treated

N/A

Method used to treat footway areas

N/A

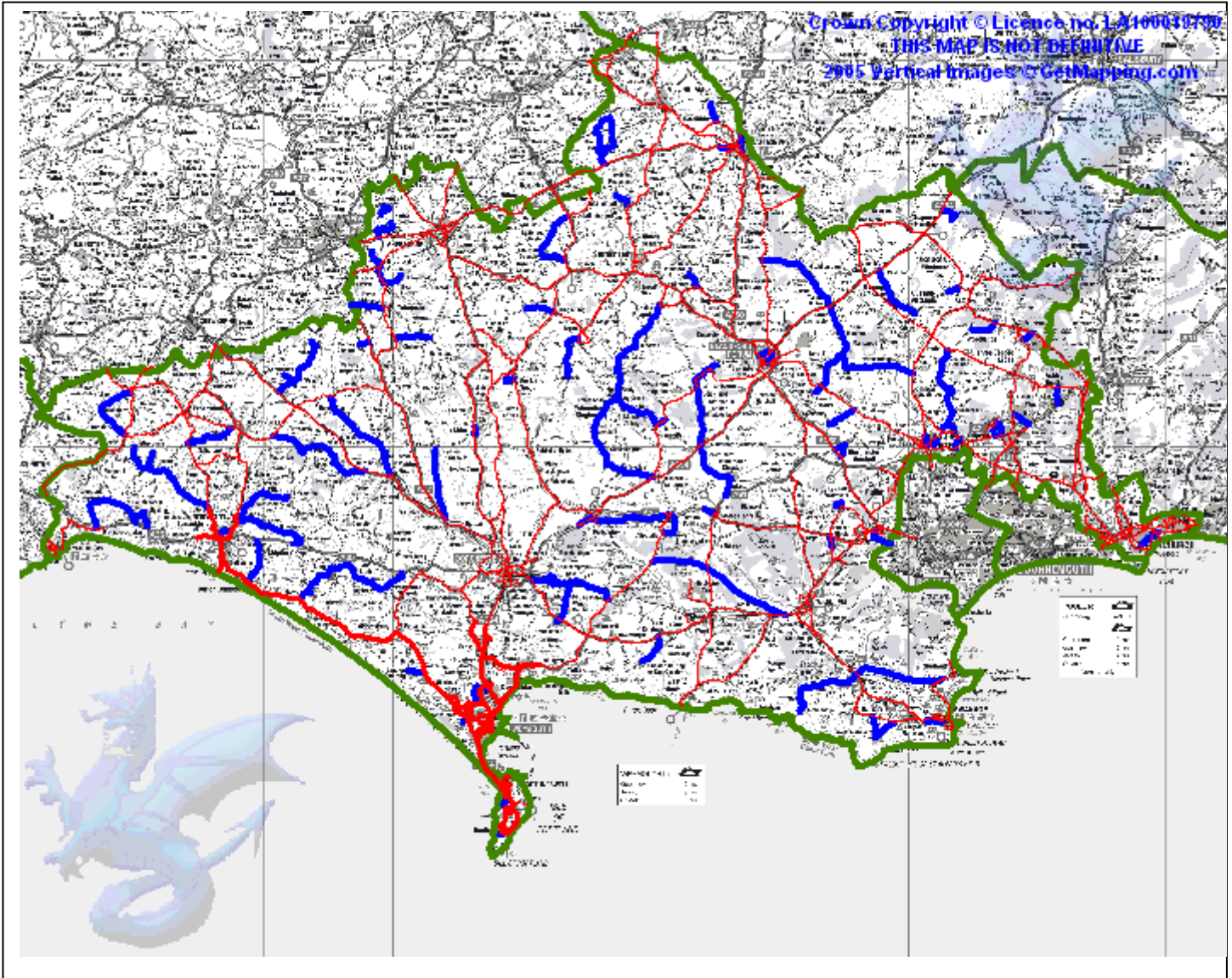
APPENDIX 3 - CRITERIA FOR INCLUSION IN DCC PRECAUTIONARY SALTING NETWORK

Precautionary Network – Carriageways

The precautionary salting network for carriageways consists of the Treated Network and satisfy one of more of the following criteria.

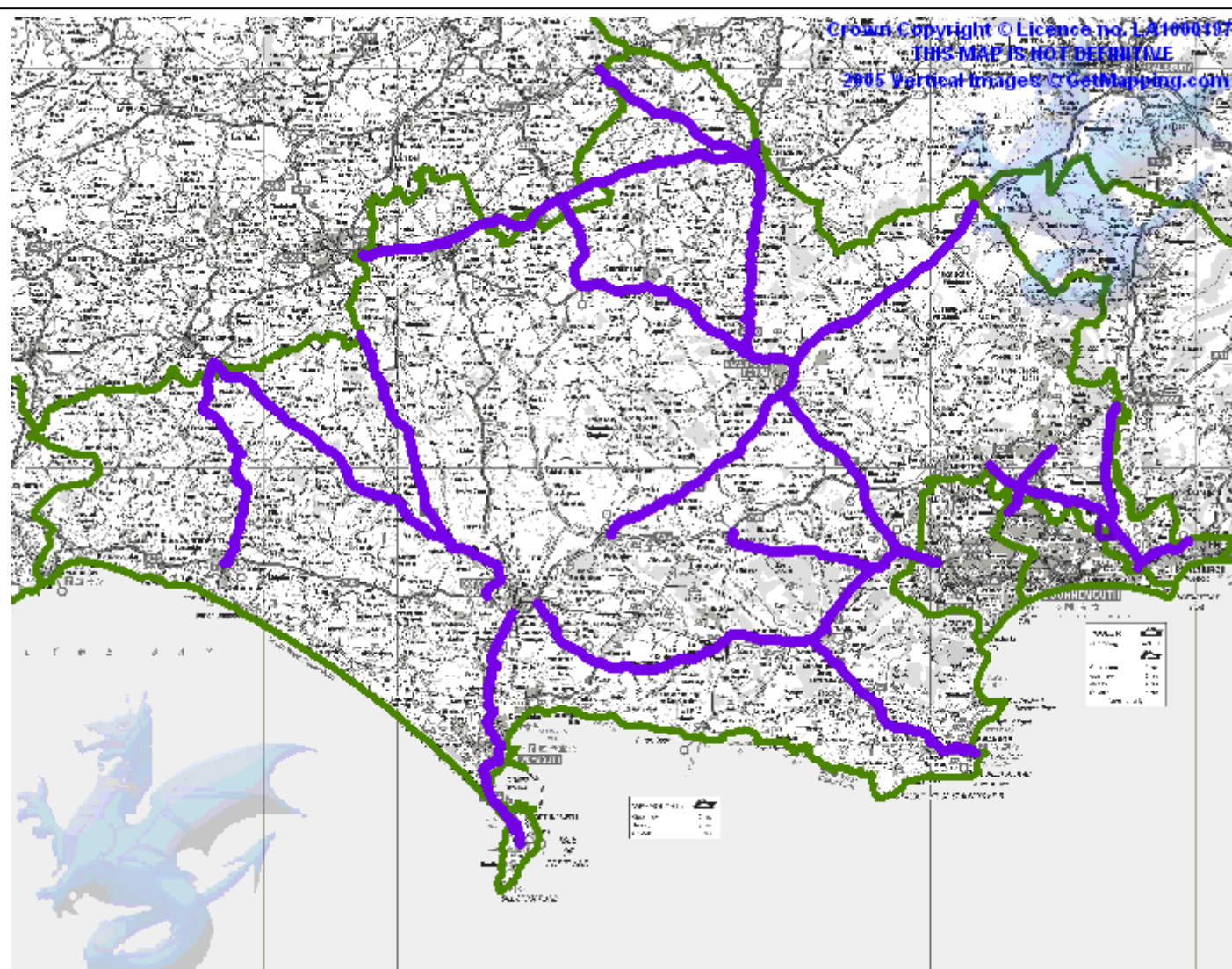
- District Distributors (A and B class roads)
- Important bus routes i.e. daily weekday service with a frequency of at least one bus per hour
- Access roads leading to large industrial establishments as defined by the Highway Network Manager.
- Access road to **large** educational establishments.
- Access roads to transport interchanges, emergency service depots.

**APPENDIX 4 - PRECAUTIONARY SALTING NETWORK (RED)
COMMUNITY ROUTES (BLUE)**



A zoomable map can be found on DCC's web site: www.dorsetforyou.com/winter

APPENDIX 5 - PRIORITY PLOUGHING NETWORK



A zoomable map can be found on DCC's web site: www.dorsetforyou.com/winter

APPENDIX 6 - FARMERS SNOW PLOUGHS

Currently the whole of the scheme is subject to a major review and full details will be included later.

In brief the new scheme will be in two parts.

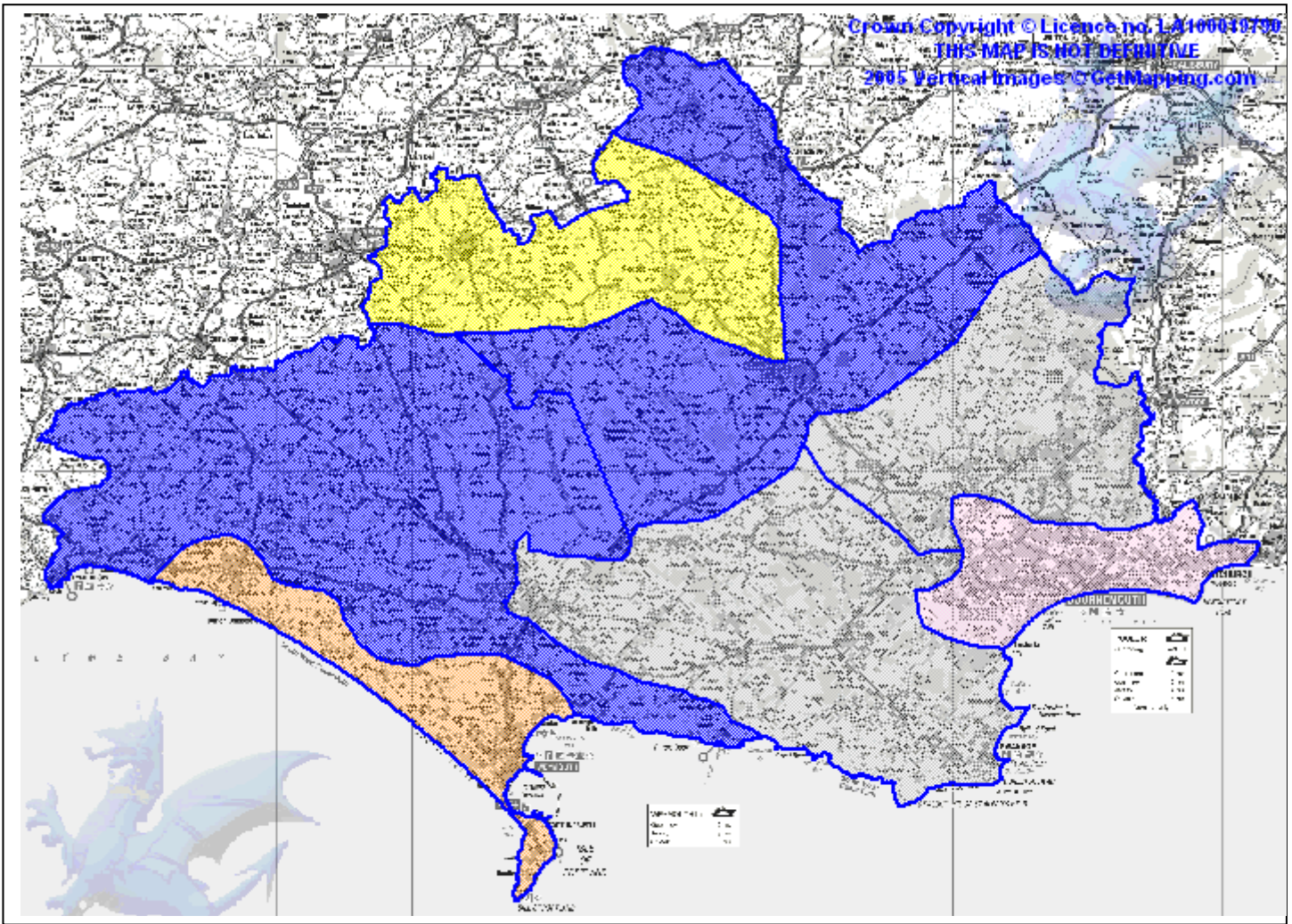
Firstly DCC will engage farmers / contractors directly to clear specific routes such as the precautionary salting network, priority ploughing network, community routes and other roads designated by the Highways Manager as conditions dictate.

The second part of the scheme will be instigated through the parish councils whereby they will arrange snow clearance of certain roads via volunteers. DCC will supply a plough as part of this scheme but will not carry out any maintenance, this will be the responsibility of the parish / volunteers.

APPENDIX 7 - WEATHER STATION MAP



APPENDIX 8 - WEATHER DOMAIN MAP



A zoomable map can be found on DCC's web site: www.dorsetforyou.com/winter

APPENDIX 9 - ADVICE ON HAND SALTING

The photographs below illustrate some of the key features of effective hand salting.



Bulk bags. One tonne bags of salt or grit delivered to undercover storage.

Grit Bins. Located where hazards are present; gradient, junction, bend etc.



DCC recommends a spread rate of approximately 20 grams of salt or grit per square metre for hand salting. Although salt can be spread with shovels care is required to ensure over salting does not occur. Push-along devices can be used to cover large areas quickly with an even spread and less waste.

- Before applying salt the snow must be removed, snow shovels are very effective for small areas.
- Plough attachments and gritting units are available for quad bikes and small grounds maintenance machines and these are suitable for larger areas.



20 grams of salt is a very small amount, you don't need a lot of salt to protect a footways. Over salting is damaging to the environment and a waste of a limited resource. You may not get your salt or bulk bags replaced if salt stocks are critical. During precautionary salting for frost DCC uses just 10 grams per square metre.

APPENDIX 10 - DCC'S WINTER SERVICE POLICY

A full copy of DCC's Winter Service Policy can be found on DCC's web site www.dorsetforyou.com.

DCC undertakes to do the following during adverse weather.

- Prepare an annual service plan approved by the cabinet member, which defines policy and practice.
- Monitor the daily forecast provided by our **weather forecast provider** between October and April and take appropriate actions. Issue a Daily Decision by email to all interested parties.
- Treat c.1,100km of the county road network as part of the precautionary salting network.
- Purchase and store at our 5 depots c.12,000 tonnes of de-icing road salt.
- Liaise with the Governments "Salt Cell" and actively participate in Mutual aid with adjacent Highway Authorities.
- Maintain a fleet of gritters and plough attachments between October and April.
- Fill road side salt bins prior to October each year.
- Deliver bulk bags of salt to parishes and towns where undercover storage has been provided prior to October each year. (This will be subject to review in 2012).
- Fund contractors to help us clear agreed local roads.

DCC does not undertake any of the following.

- To hand treat footways / cycleways / precincts as a precautionary operation.
- Treat private, 3rd party or non highway land.
- Refill salt bins or bulk bags when salt / grit supplies are critical.
- Fund farmers or contractors to clear additional roads over and above the agreed local roads without prior approval.